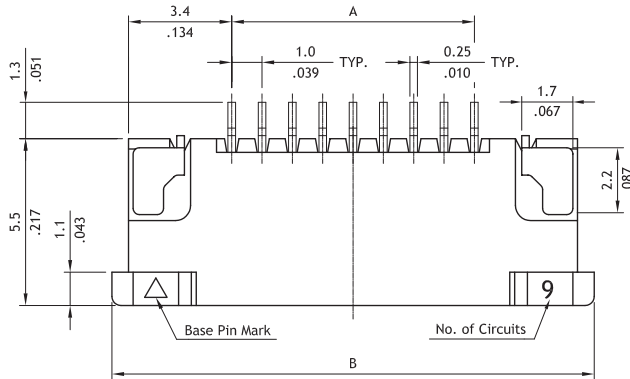


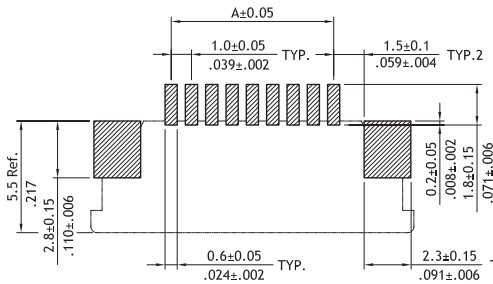
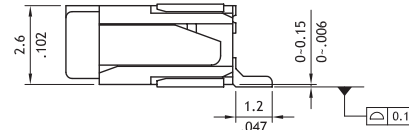
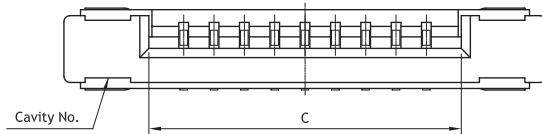
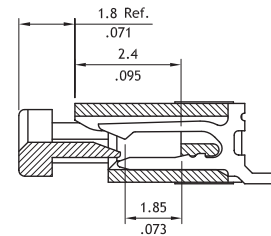
"Your Connection"

PA02 Series 1.00mm(.039") SMT ZIF FFC/FPC Upside Connectors

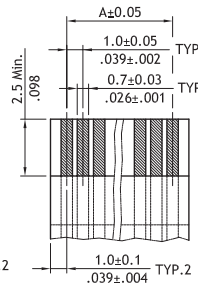
- ⊙ Tin plated Phosphor Bronze Upside contact
- ⊙ Insulation: Glass filled Nylon 6T UL 94V-0, Color Natural
- ⊙ Slider: High temperature plastic UL 94V-0, Color Brown
- ⊙ Actuator designed for easy FFC/FPC installation
- ⊙ Fully checked by CCD and Hi-Pot test
- ⊙ With fixed metal tabs to secure connector in place
- ⊙ Available in Tube or Reel packing
- ⊙ Engineering No's: CF07 Series



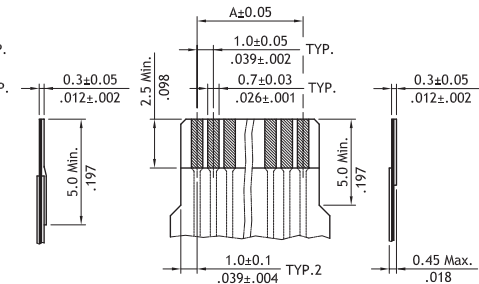
A = 1.00 * No. of Spaces
B = A + 8.0
C = A + 2.3
* Available in 4 through 32 circuits



Solder Pad Pattern



Accommodated FFC



Accommodated FPC

Ordering Code

1 PA02 2 32 3 1 4 U 5 0 6 R 7 0

- ❶ Series No.
- ❷ Circuits : 04 to 32
- ❸ Plating code:
1= Tin over Nickel

- ❹ Contact style:
U= Upside contact
- ❺ Color: 0= Natural

- ❻ Packing options:
R= Tape & Reel
T= Tube Packing
- ❼ Other options:
0= Standard
* Special options Consult factory