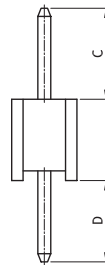
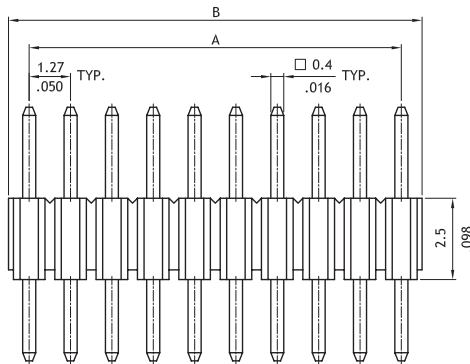
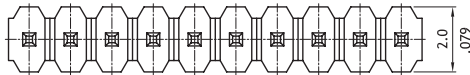


PG02 Series Single Row Board Mount Pin Header

1.27mm(.050") Center Spacing

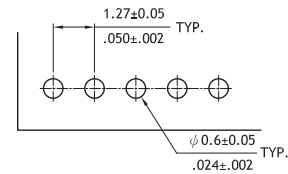
- ⊙ Mates with PF01
- ⊙ Engineering No's: CH02/1271 Series



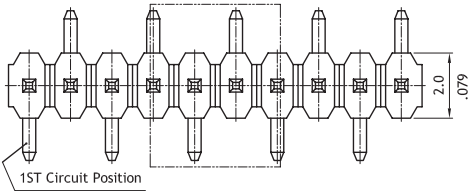
DIM. A = 1.27 X No. of Spaces
 DIM. B = DIM. A + 1.27
 * Available in 4 through 50 Circuits

E82349

Option Code	Pin Dimension	
	C	D
00	3.0(.118)	2.3(.091)

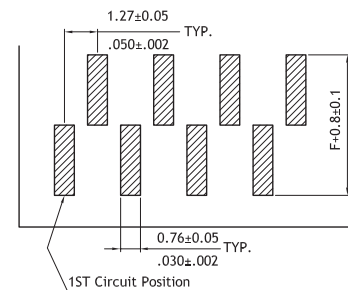
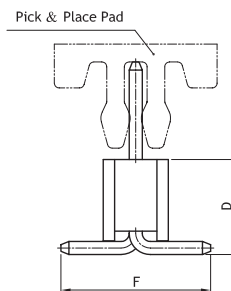
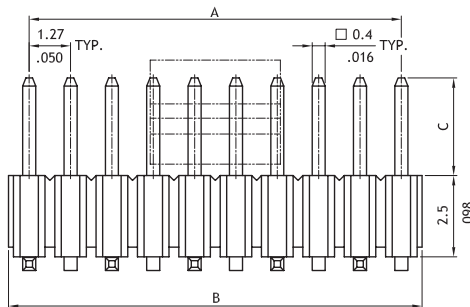


Recommended P.C. Board Layout



DIM. A = 1.27 X No. of Spaces
 DIM. B = DIM. A + 1.27
 * Available in 4 through 50 Circuits

Option Code	Pin Dimension		
	C	D	F
00	3.0(.118)	2.92(.115)	4.6(.181)



Recommend P.C. Board Layout

Ordering Code

1 **2** **3** **4** **5** **6** **7** **8**
PG02 50 2 V 1 00 - 0 0

- 1** Series No.
- 2** Circuits: 04 to 50
- 3** Plating code:
 2= Gold flash over Nickel plated
 * Optional plating available but MOQ requested
- 4** Tail & Mounting Style:
 V= Straight DIP type
 M= Straight SMT type
- 5** Insulator Material & Color:
 1= Nylon 6T, Color Black
- 6** Other options:
 00= Standard
- 7** Pin Size:
 0= Original design
- 8** 0= Without Pick & Place Pad (Tube packing)
 P= With Pick & Place Pad (Tape & Reel)
 * Number 7 and 8 only for SMT Type

G

PROLEX