

PB04 Series 2.00mm(.079") Wire to Board Connector

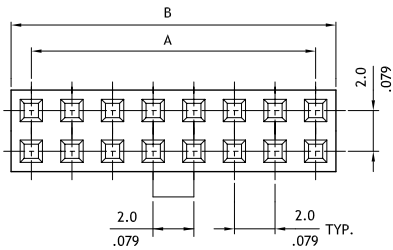
- ⊙ Low profile dual row latch housing
- ⊙ Mates with PG13, PG16 header
- ⊙ Compatible with PB03 crimp clip terminal
- ⊙ Terminal accommodates AWG #26 ~ #30



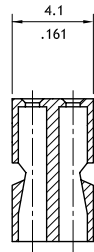
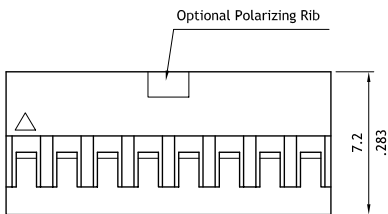
Construction

- ⊙ Insulator: Nylon 66 UL 94V-2, Color Black
- ⊙ Terminal: Tin or Gold flash plated Brass
- ⊙ Engineering No's: CI04/2066 Series

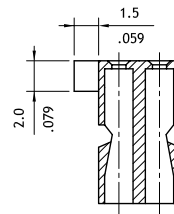
: E82349



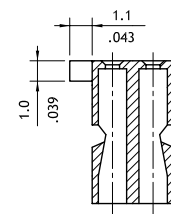
Circuits	Dimension		Circuits	Dimension	
	A	B		A	B
4	2.0(.079)	4.3(.169)	44	42.0(1.654)	44.3(1.744)
6	4.0(.157)	6.3(.248)	50	48.0(1.890)	50.3(1.980)
8	6.0(.236)	8.3(.327)	52	50.0(1.969)	52.3(2.059)
10	8.0(.315)	10.3(.406)	54	52.0(2.047)	54.3(2.138)
12	10.0(.394)	12.3(.484)	56	54.0(2.126)	56.3(2.217)
14	12.0(.472)	14.3(.563)	58	56.0(2.205)	58.3(2.295)
16	14.0(.551)	16.3(.642)	60	58.0(2.283)	60.3(2.374)
18	16.0(.630)	18.3(.720)	62	60.0(2.362)	62.3(2.453)
20	18.0(.709)	20.3(.799)	64	62.0(2.441)	64.3(2.531)
22	20.0(.787)	22.3(.878)	66	64.0(2.520)	66.3(2.610)
24	22.0(.866)	24.3(.957)	68	66.0(2.598)	68.3(2.689)
26	24.0(.945)	26.3(1.035)	70	68.0(2.677)	70.3(2.768)
28	26.0(1.024)	28.3(1.114)	72	70.0(2.756)	72.3(2.846)
30	28.0(1.102)	30.3(1.193)	74	72.0(2.835)	74.3(2.925)
32	30.0(1.181)	32.3(1.272)	76	74.0(2.913)	76.3(3.004)
34	32.0(1.260)	34.3(1.350)	78	76.0(2.992)	78.3(3.083)
40	38.0(1.496)	40.3(1.587)	80	78.0(3.071)	80.3(3.161)



P/N:PB04**S0010



P/N:PB04**S001A



P/N:PB04**S001B

Ordering Code

① **PB04**
 ② **50**
 ③ **S**
 ④ **001**
 ⑤ **0**

- ① Series No.
- ② No. of Circuits: 04 to 80
- ③ S= Connector housing
- ④ Color:
001= Color Black

- ⑤ Other options:
 0= Without Polarizing Rib
 A= With Polarizing Rib
 B= With Half Polarizing Rib
 * Special options Consult factory