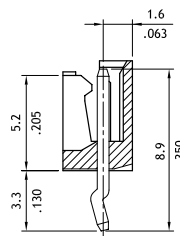
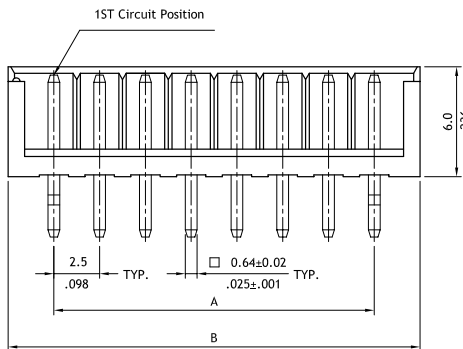
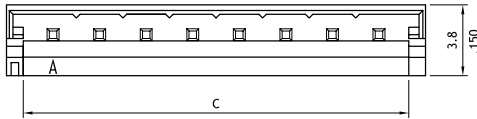


**PB05 Series 2.50mm(.098") Pin Header**

- ⊙ With locking slot and kinked pin
- ⊙ Mates with PB05 housing

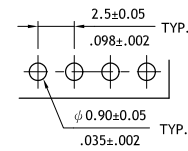
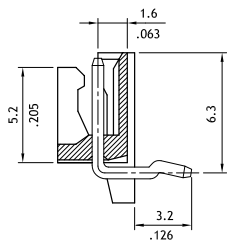
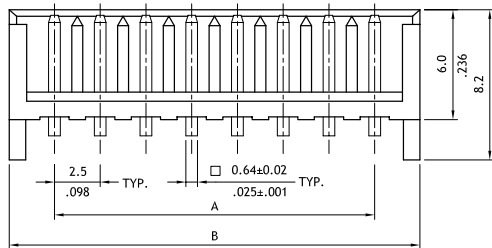
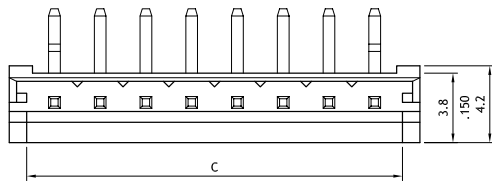
**Construction**

- ⊙ Insulator: Nylon 66 UL 94V-0, Color Natural
- ⊙ With Tin plated 0.64mm square pin
- ⊙ Engineering No's: CI21/2421 Series



**RE** E159616

Circuits	Dimension		
	A	B	C
2	2.5(.098)	7.5(.295)	5.7(.224)
3	5.0(.197)	10.0(.394)	8.2(.323)
4	7.5(.295)	12.5(.492)	10.7(.421)
5	10.0(.394)	15.0(.591)	13.2(.520)
6	12.5(.492)	17.5(.689)	15.7(.618)
7	15.0(.591)	20.0(.787)	18.2(.717)
8	17.5(.689)	22.5(.886)	20.7(.815)
9	20.0(.787)	25.0(.984)	23.2(.913)
10	22.5(.886)	27.5(1.083)	25.7(1.012)
11	25.0(.984)	30.0(1.181)	28.2(1.110)
12	27.5(1.083)	32.5(1.280)	30.7(1.209)
13	30.0(1.181)	35.0(1.378)	33.2(1.307)
14	32.5(1.280)	37.5(1.476)	35.7(1.406)
15	35.0(1.378)	40.0(1.575)	38.2(1.504)



Recommended P.C. Board Layout

**Ordering Code**

**1** **2** **3** **4** **5** **6**  
**PB05 15 P 1 V K0**

- 1** Series No.
- 2** No. of Circuits: 02 to 15
- 3** P= Pin header
- 4** Plating code:  
1= Tin over Nickel plated
- 5** Type: V= Straight  
H= Right angle
- 6** Other options:  
00= Without kinked pin  
K0= With kinked pin (Standard)  
\* Special options Consult factory