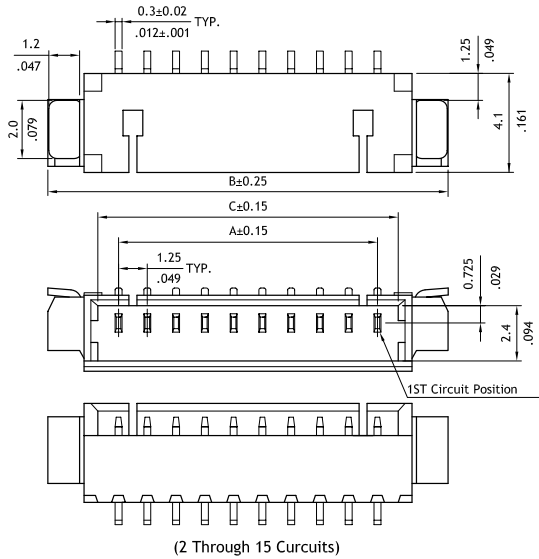


# PB16 Series 1.25mm(.049") SMT Header

- ⊙ Polarized and Low-profile
- ⊙ Locking slots provide secure mating
- ⊙ Mate tabs provide PCB hold-down and strain-relief for SMT tails

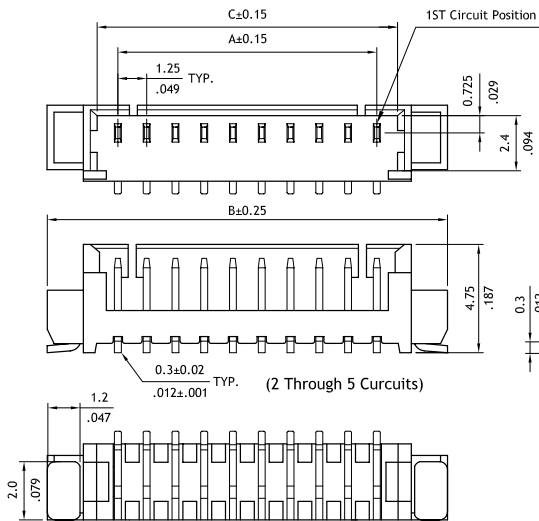
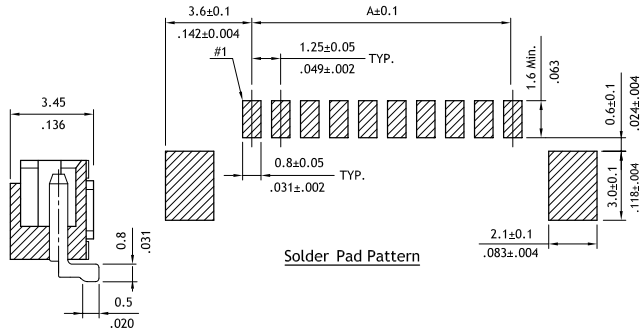
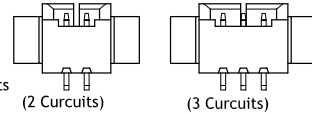
## Construction

- ⊙ Insulator: High temperature plastic UL 94V-0, Color Natural
- ⊙ With Tin plated SMT type pin
- ⊙ Engineering No's: CI44/1254 Series



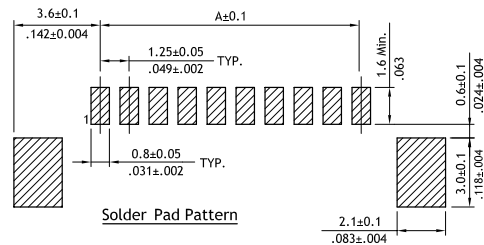
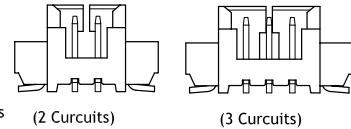
A = 1.25 x No. of Spaces  
 B = A + 6.0  
 C = A + 1.8

\* Available in 4 through 15 circuits



A = 1.25 x No. of Spaces  
 B = A + 6.0  
 C = A + 1.8

\* Available in 4 through 15 circuits



## Ordering Code

**1** PB **16** **2** **15** **3** **M** **4** **1** **5** **V** **6** **00**

**1** Series No.

**2** No. of Circuits : 02 to 15

**3** M= SMT type header

**4** Plating code:

1= Tin over Nickel plated

\* Optional plating available but  
 MOQ requested

**5** Type: V= Straight

H= Right angle

**6** Other options: 00= Standard

\* Special options Consult factory