

PB17 Series 1.25mm(.049") DIP and SMT Header

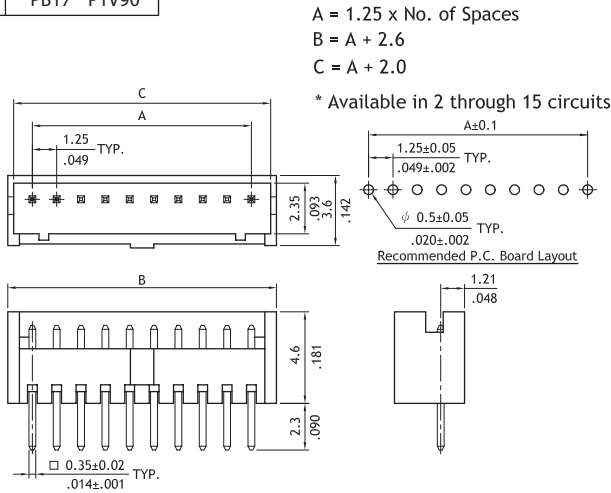
- ⊙ Polarized and Low-profile
- ⊙ Locking slots provide secure mating
- ⊙ Please see table below for available circuits

Construction

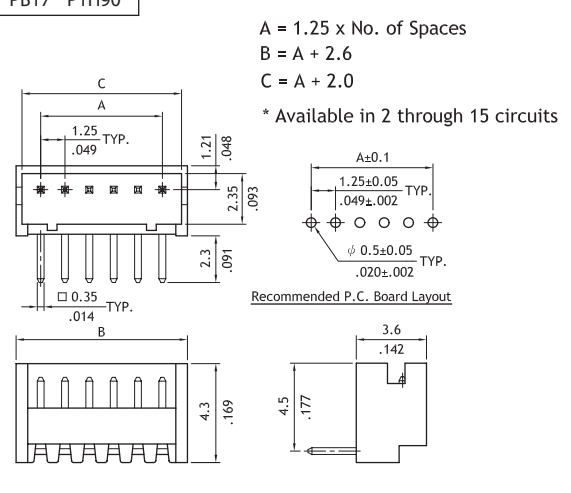
- ⊙ Insulator:
 - DIP type pin header: Nylon 66 UL 94V-0, Color Gray
 - SMT type header: High temperature plastic UL 94V-0, Color Natural
- ⊙ With Tin plated 0.35mm square pin
- ⊙ Engineering No's: CI47 Series



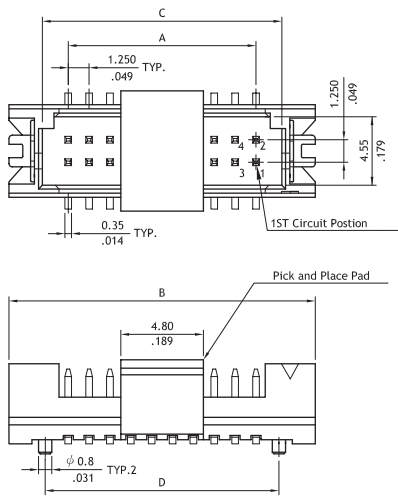
P/N PB17**P1V90



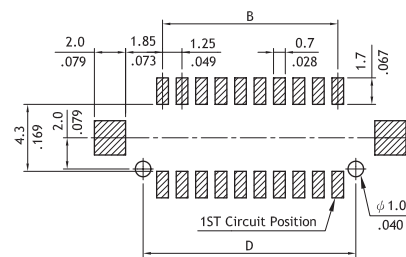
P/N PB17**P1H90



P/N PB17**M1000



Circuits	Dimension			
	A	B	C	D
10	5.00(.197)	12.10(.476)	8.10(.319)	7.50(.295)
20	11.25(.443)	18.35(.722)	14.35(.565)	13.75(.541)
30	17.50(.689)	24.60(.969)	20.60(.811)	20.00(.787)
40	23.75(.935)	30.85(1.215)	26.85(1.057)	26.25(1.033)



Ordering Code

- | | | | | | |
|-------------|-----------|----------|----------|----------|-----------|
| 1 | 2 | 3 | 4 | 5 | 6 |
| PB17 | 15 | P | 1 | V | 00 |
- 1** Series No.
 - 2** No. of Circuits:
See Drawing
 - 3** P= Pin header
M= SMT header
 - 4** Plating code:
1= Tin over Nickel plated
* Optional plating available but
MOQ requested
 - 5** Type: V= Straight
H= Right angle
O= SMT Type header
 - 6** Other options:
DIP Type: 90= Color Gray
SMT Type: 00= Tube packing
R0= Tape & Reel