

## PB18 Series 3.96mm(.156") Wire to Board Connector

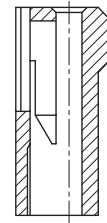
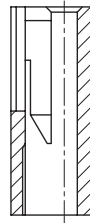
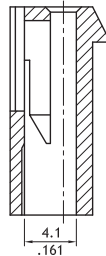
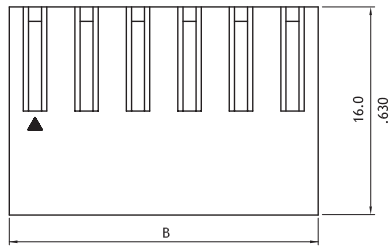
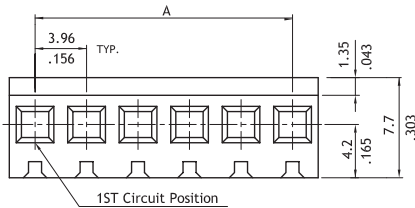
- ⊙ With locking tab
- ⊙ Mates with PG18, PG24 header
- ⊙ Compatible with PB18 crimp clip terminal
- ⊙ Terminal accommodates AWG #18 ~ #24

### Construction

- ⊙ Insulation: Nylon 66 UL 94V-2, Color Natural
- ⊙ Terminal: Tin plated Brass
- ⊙ Engineering No's: CI51/3940 Series



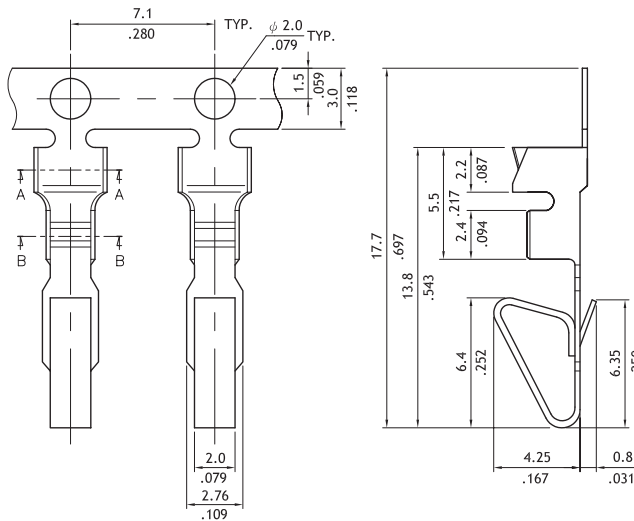
**AI AI**:E159616



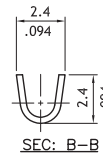
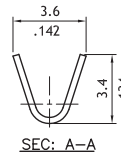
Circuits	Dimension	
	A	B
2	3.96(.156)	8.0(.315)
3	7.92(.312)	12.0(.472)
4	11.88(.468)	15.9(.626)
5	15.84(.624)	19.9(.783)
6	19.80(.780)	23.9(.941)
7	23.76(.935)	28.0(1.102)
8	27.72(1.091)	32.0(1.260)
9	31.68(1.247)	35.9(1.413)
10	35.64(1.403)	39.9(1.571)
11	39.60(1.559)	43.9(1.728)
12	43.56(1.715)	47.8(1.882)
13	47.52(1.871)	51.8(2.039)
14	51.48(2.027)	55.7(2.193)
15	55.44(2.183)	59.7(2.350)
16	59.40(2.339)	63.7(2.508)
17	63.36(2.494)	67.6(2.661)
18	67.32(2.650)	71.6(2.819)
19	71.28(2.806)	75.5(2.972)
20	75.24(2.962)	79.5(3.130)

P/N:PB18\*\*S0000 P/N:PB18\*\*S000R P/N:PB18\*\*S00DR

### ⊙ Engineering No's: CI51/3979 Series



Part No.	Wire Range	Insulation	Thickness	Reel Qty
PB18T031*E0	AWG #18-#24	2.48 (.098) MAX.	0.25mm	6,000 PCS
PB18T031*EX	AWG #18-#24	2.48 (.098) MAX.	0.30mm	6,000 PCS



## Ordering Code

**1** **2** **3** **4**  
**PB18 20 S 0000**

- ① Series No.
- ② No. of Circuits: 02 to 20
- ③ S= Connector housing
- ④ Other options:  
 0000= With locking Ramp (Standard)  
 000R= Without locking Ramp  
 00DR= Low force locking Ramp  
 \* Special options Consult factory

**1** **2** **3** **4** **5** **6**  
**PB18 T03 1 B E 0**

- ① Series No.
- ② Type: T03= AWG #18 ~ #24
- ③ Plating : 1= Tin over Nickel plated  
 \* Optional plating available but MOQ requested
- ④ Material: B= Brass; P= Phosphor Bronze
- ⑤ Plating method : E= Pre-tinned
- ⑥ Other options:  
 0= Thickness 0.25mm (Standard)  
 x= Thickness 0.3mm