

PB20 Series 5.00mm(.197") Wire to Board Connector

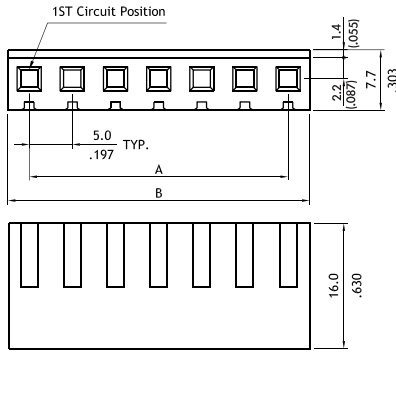
- ⊙ Housing with locking tab
- ⊙ Header with locking wall
- ⊙ Mates with PG20, PG25 header
- ⊙ Compatible with PB18 crimp clip terminal
- ⊙ Terminal accommodates AWG #18 ~ #24



Construction

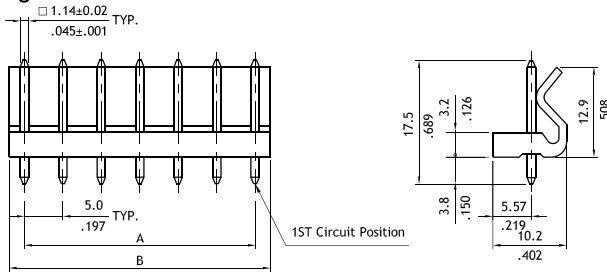
- ⊙ Insulator: Nylon 66 UL 94V-2, Color Natural
- ⊙ With Tin plated 1.14mm square pin
- ⊙ Terminal: Tin plated Brass
- ⊙ Engineering No's: CI54/5000 Series

UL E159616



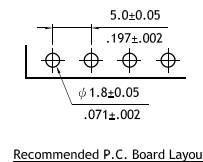
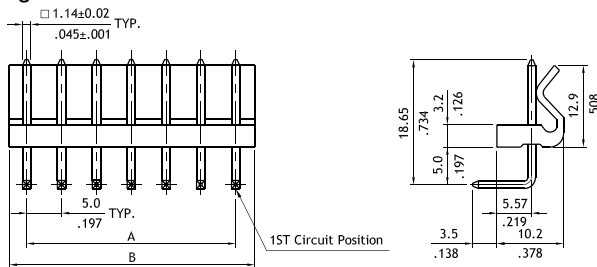
Circuits	Dimension	
	A	B
2	5.0(.197)	10.0(.394)
3	10.0(.394)	15.0(.591)
4	15.0(.591)	20.0(.787)
5	20.0(.787)	25.0(.984)
6	25.0(.984)	30.0(1.181)
7	30.0(1.181)	35.0(1.378)
8	35.0(1.378)	40.0(1.575)
9	40.0(1.575)	45.0(1.772)
10	45.0(1.772)	50.0(1.969)

⊙ Engineering No's: CI54/5001 Series



Circuits	Dimension	
	A	B
2	5.0(.197)	10.3(.406)
3	10.0(.394)	15.3(.602)
4	15.0(.591)	20.3(.799)
5	20.0(.787)	25.3(.996)
6	25.0(.984)	30.3(1.193)

⊙ Engineering No's: CI54/5002 Series



Ordering Code

1 PB20 2 10 3 S 4 0000

- 1 Series No.
- 2 No. of Circuits: 02 to 10
- 3 S= Connector housing
- 4 Other options:
0000= Standard
* Special options Consult factory

1 PB20 2 06 3 P 4 I 5 V 6 00

- 1 Series No.
- 2 No. of Circuits: 02 to 6
- 3 P= Pin header
- 4 Plating code: 1= Tin over Nickel plated
* Optional plating available but MOQ requested
- 5 Type: V= Straight; H= Right angle
- 6 Other options: 00= Standard
* Special options Consult factory