

PB24/PB25 Series Breakaway Pin Headers

- ⊙ Mates with PB18, PB20 connector
- ⊙ Available in straight and right angle
- ⊙ Optional plating available

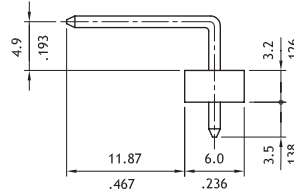
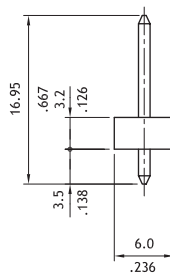
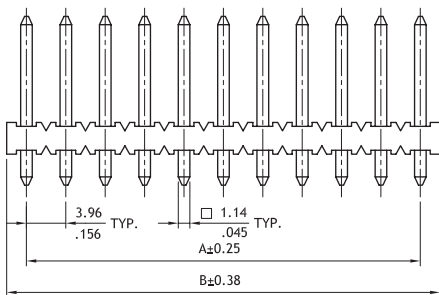
Construction

- ⊙ Insulator: Glass filled Polyester UL 94V-0, Color White
- ⊙ With Tin plated 1.14mm square pin
- ⊙ Engineering No's: CI77/3986 Series

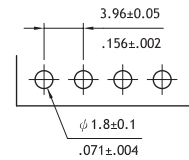


AI AI:E159616

P/N PB24**P1*00

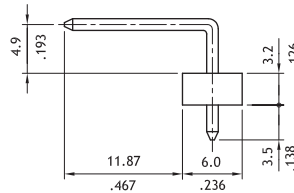
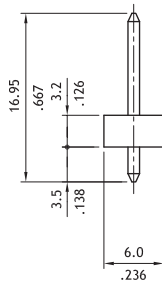
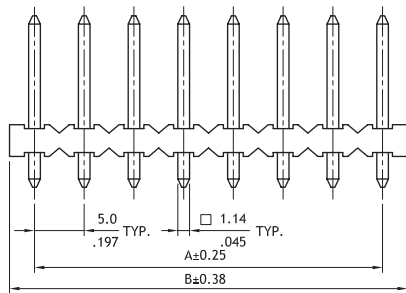


A = 3.96 x No. of Spaces
 B = A + 3.96
 * Available in 2 through 20 circuits

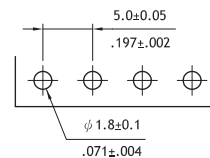


Recommended P.C. Board Layout

P/N PB25**P1*00



A = 5.0 x No. of Spaces
 B = A + 5.0
 * Available in 2 through 20 circuits



Recommended P.C. Board Layout

Ordering Code

1 **PB**** **2** **20** **3** **P** **4** **1** **5** **V** **6** **00**

- 1** Series No.
 PB24= 3.96mm center spacing
 PB25= 5.00mm center spacing
- 2** No. of Circuits: 02 to 20

- 3** P= Pin header
- 4** Plating code:
 1= Tin over Nickel plated
 * Optional plating available but
 MOQ requested

- 5** Type: V= Straight
 H= Right angle
- 6** Other options:
 00= Color White (Standard)
 * Special options Consult factory