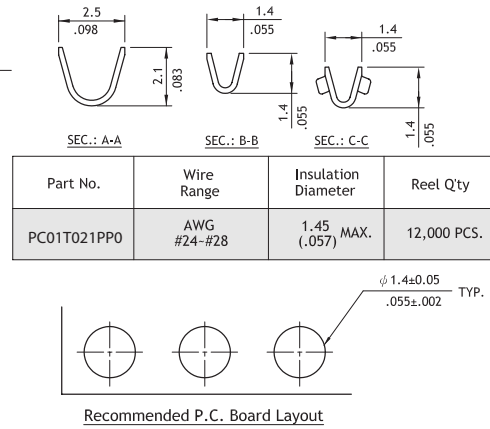
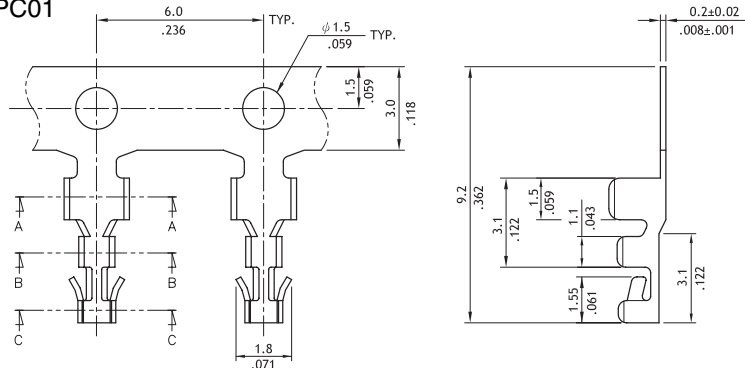


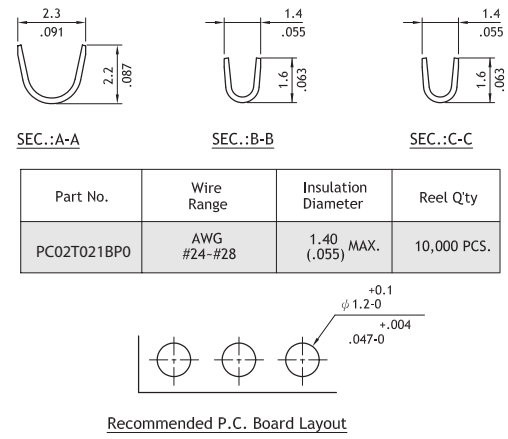
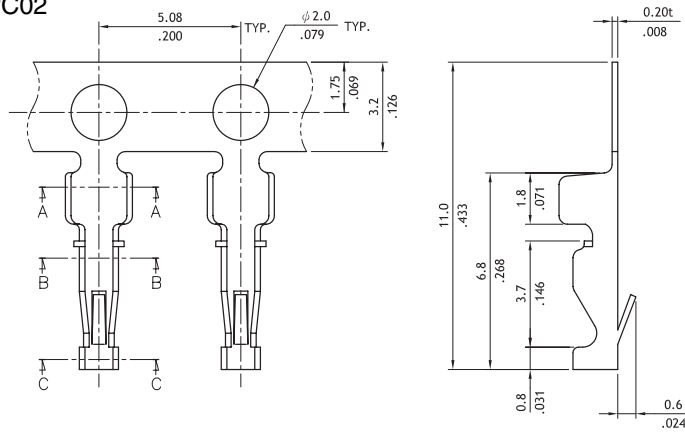
# PC01/PC02/PC03 Series Board in Terminal Connectors

- ⊙ Accommodates a wide range of wires in various applications
- ⊙ Low cost and reliable
- ⊙ Terminals with latch or clipper to secure on PC board during soldering process
- ⊙ Can be used with our crimping machine for termination
- ⊙ Engineering No's: CT01/CT02/CT03 Series

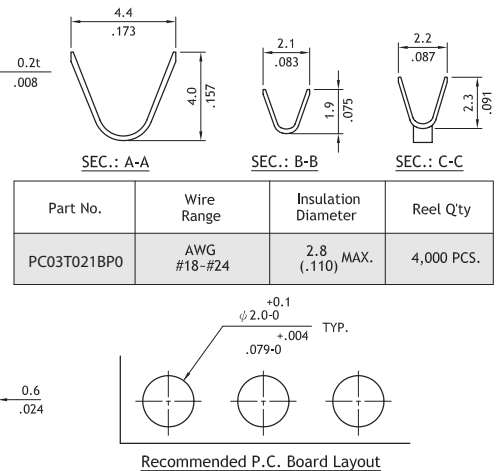
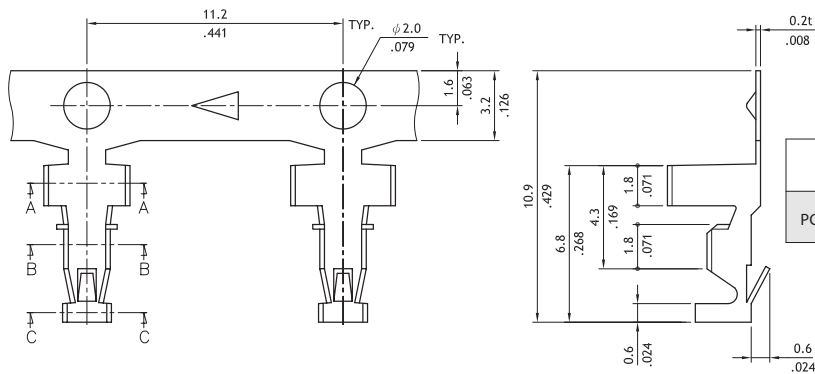
● PC01



● PC02



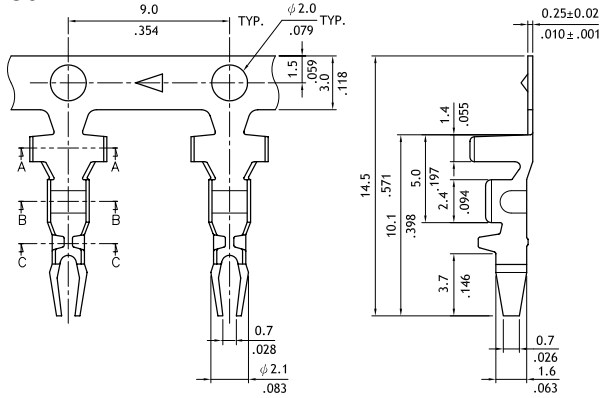
● PC03



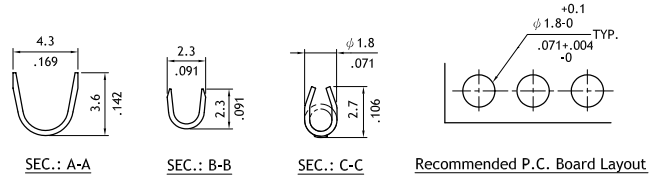
## PC04/PC05/PC06 Series Board in Terminal

- ⊙ Accommodates a wide range of wires in various applications
- ⊙ Low cost and reliable
- ⊙ Terminals with latch or clipper to secure on PC board during soldering process
- ⊙ Can be used with our crimping machine for termination
- ⊙ Engineering No's: CT05/CT07/CT08 Series

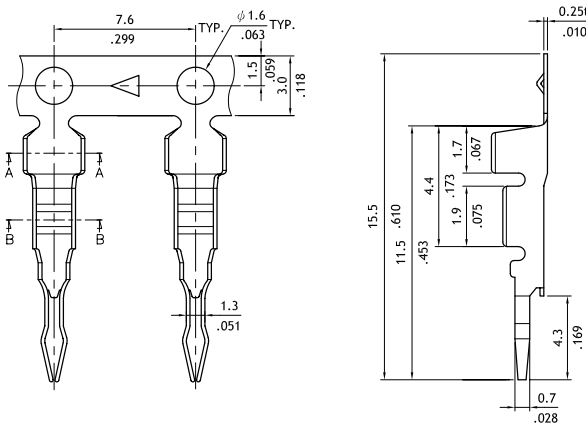
### • PC04



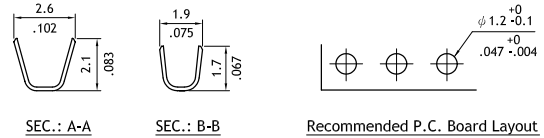
Part No.	Wire Range	Insulation Diameter	Reel Qty
PC04T031PE0	AWG #18-#24	2.65 (.104) MAX.	5,000 PCS.



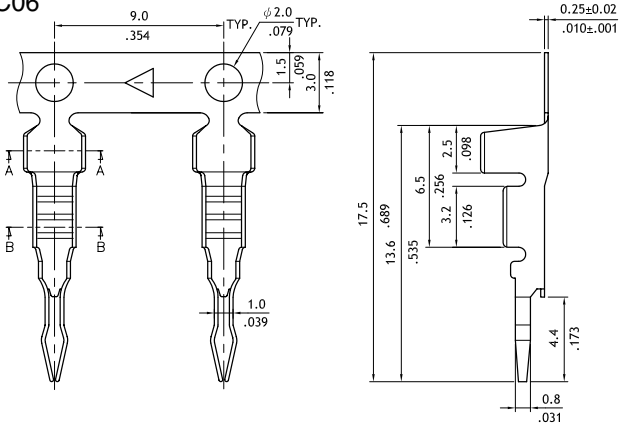
### • PC05



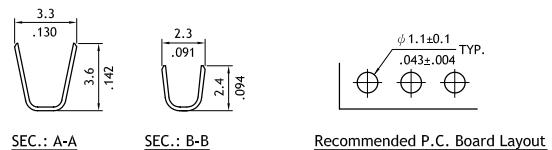
Part No.	Wire Range	Insulation Diameter	Reel Qty
PC05T021PE0	AWG #22-#28	1.6 (.063) MAX.	10,000 PCS.



### • PC06



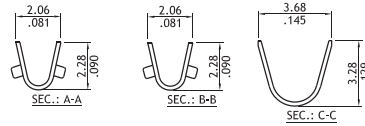
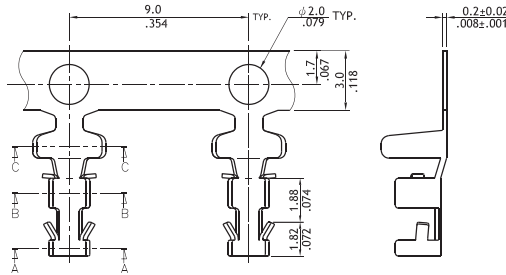
Part No.	Wire Range	Insulation Diameter	Reel Qty
PC06T031PE0	AWG #18-#22	2.2 (.087) MAX.	5,000 PCS.



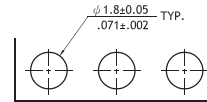
**PC07/PC08/PC09/PC10 Series Board in Terminal**

© Engineering No's: CT09/CT10/CT11/CT12 Series

• PC07

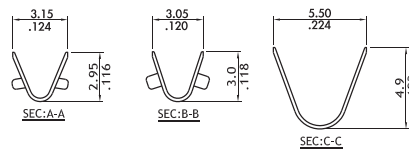
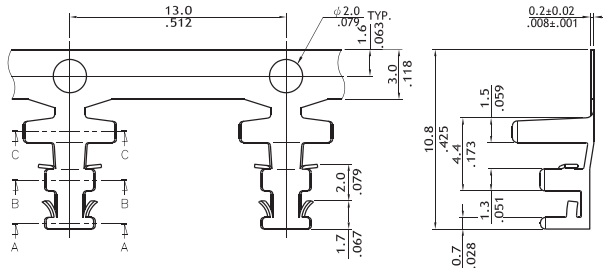


Part No.	Wire Range	Insulation Diameter	Reel Qty
PC07T031PE0	AWG #18-#22	2.05 (.079) MAX.	7,500 PCS.

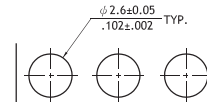


Recommended P.C. Board Layout

• PC08

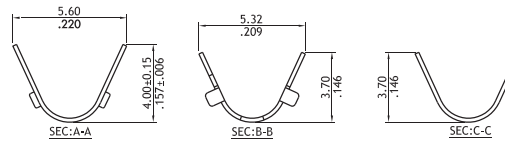
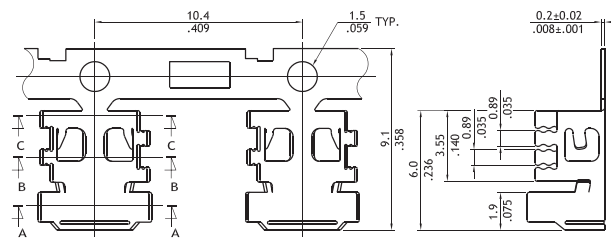


Part No.	Wire Range	Insulation Diameter	Reel Qty
PC08TA31PE0	AWG #18x2	2.05 (.079) MAX.	3,500 PCS.

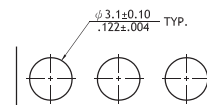


Recommended P.C. Board Layout

• PC09

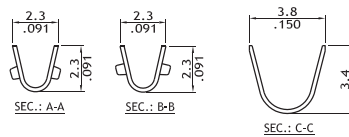
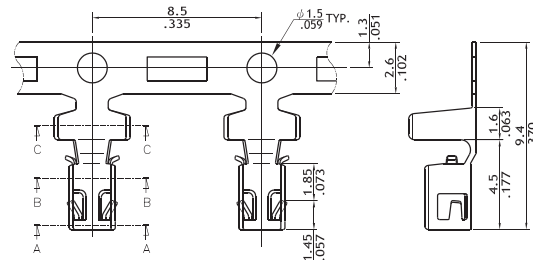


Part No.	Wire Range	Insulation Diameter	Reel Qty
PC09TA31PE0	AWG #18x(3-4)	2.05 (.079) MAX.	3,500 PCS.

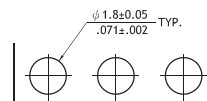


Recommended P.C. Board Layout

• PC10



Part No.	Wire Range	Insulation Diameter	Reel Qty
PC10T031PE0	AWG #18-#24	2.05 (.079) MAX.	7,000 PCS.



Recommended P.C. Board Layout