

**PB13 Series 2.54mm(.100") Wire to Board Connector**

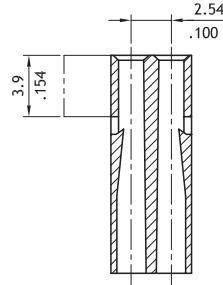
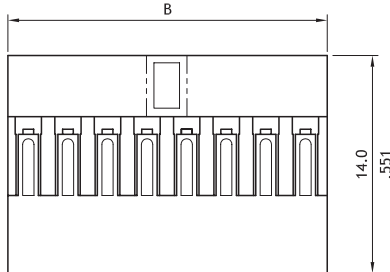
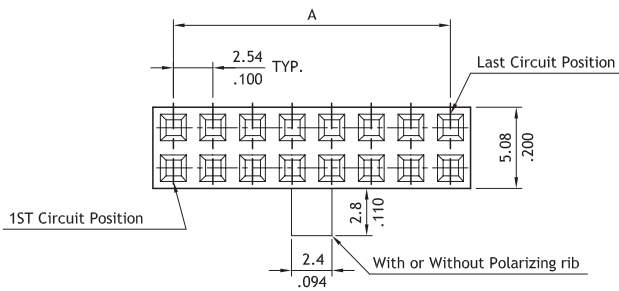
- ⊙ Dual row latch housing
- ⊙ Mates with PG19, PG24 and PG21 header
- ⊙ Compatible with PB13 crimp clip terminal
- ⊙ Terminal accommodates AWG #22 ~ #28

**Construction**

- ⊙ Insulator: Nylon 66 UL 94V-1, Color Black
- ⊙ Terminal: Tin or Gold flash plated Brass or Phosphor Bronze
- ⊙ Engineering No's: CI34/2655 Series



**RI RI**:E159616



Circuits	Dimension	
	A	B
4	2.54(.100)	5.1(.201)
6	5.08(.200)	7.6(.299)
8	7.62(.300)	10.2(.402)
10	10.16(.400)	12.7(.500)
12	12.70(.500)	15.2(.598)
14	15.24(.600)	17.8(.701)
16	17.78(.700)	20.3(.799)
18	20.32(.800)	22.9(.902)
20	22.86(.900)	25.4(1.000)
22	25.40(1.000)	27.9(1.098)
24	27.94(1.100)	30.5(1.201)
26	30.48(1.200)	33.0(1.299)
28	33.02(1.300)	35.6(1.402)
30	35.56(1.400)	38.1(1.500)
32	38.10(1.500)	40.6(1.598)
34	40.64(1.600)	43.2(1.701)
36	43.18(1.700)	45.7(1.799)
38	45.72(1.800)	48.3(1.902)
40	48.26(1.900)	50.8(2.000)

**Ordering Code**

**1** **PB13**      **2** **40**      **3** **S**      **4** **0010**

**1** Series No.

**2** No. of Circuits:  
04 to 40

**3** S= Connector housing

**4** Other options:

0010= Color Black, without polarizing Rib

001A= Color Black, with polarizing Rib

\* Special options Consult factory