

PB14 Series 2.54mm(.100") Pin Header

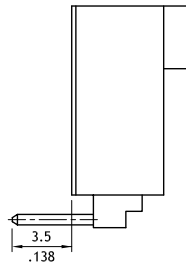
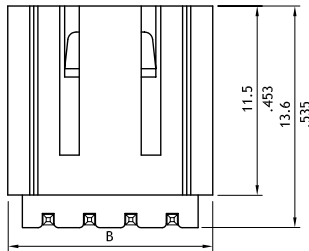
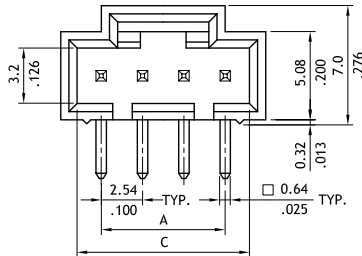
- ⊙ Box type with locking slot
- ⊙ Mates with PB14 Single row housing

Construction

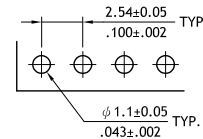
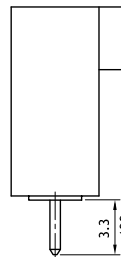
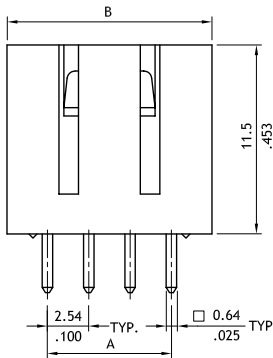
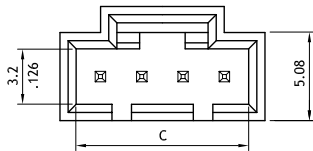
- ⊙ Insulation: Glass filled polyester UL 94V-0, Color Black
- ⊙ With Tin plated 0.64mm square pin
- ⊙ Engineering No's: CI33/2550 Series



E159616



Circuits	Dimension		
	A	B	C
2	2.54(.100)	7.6(.299)	5.52(.217)
3	5.08(.200)	10.2(.402)	8.06(.317)
4	7.62(.300)	12.7(.500)	10.6(.417)
5	10.16(.400)	15.2(.598)	13.14(.517)
6	12.7(.500)	17.8(.701)	15.68(.617)
7	15.24(.600)	20.3(.799)	18.22(.717)
8	17.78(.700)	22.9(.902)	20.76(.817)
9	20.32(.800)	25.4(1.000)	23.3(.917)
10	22.86(.900)	27.9(1.098)	25.84(1.017)
11	25.4(1.000)	30.5(1.201)	28.38(1.117)
12	27.94(1.100)	33.0(1.299)	30.92(1.217)
13	30.48(1.200)	35.6(1.402)	33.46(1.317)



Recommended P.C. Board Layout

Ordering Code

1 **PB14** **2** **18** **3** **P** **4** **1** **5** **V** **6** **10**

- 1** Series No.
- 2** No. of Circuits : 02 to 18
- 3** P= Pin header
- 4** Plating:
1= Tin over Nickel plated
* Optional plating available but MOQ requested
- 5** Type:
V= Straight
H= Right angle
- 6** Other options:
10= Color Black (Standard)
* Special options Consult factory